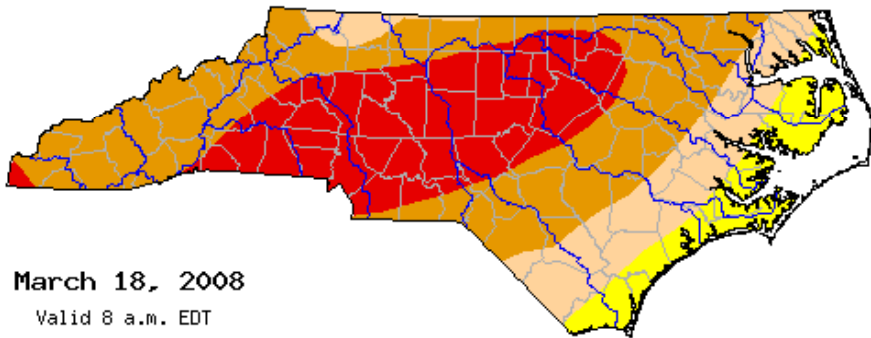


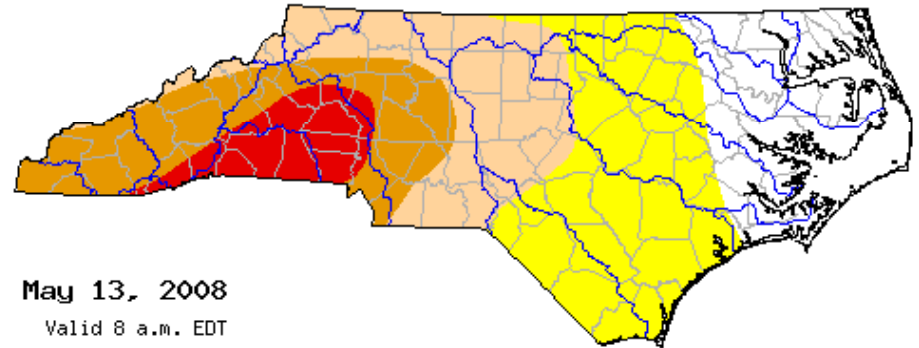
North Carolina Report
MAMCA
2008

Presented by
Walker H. Rayburn, Jr.
Presented Feb, 2009

Drought Condition 2009



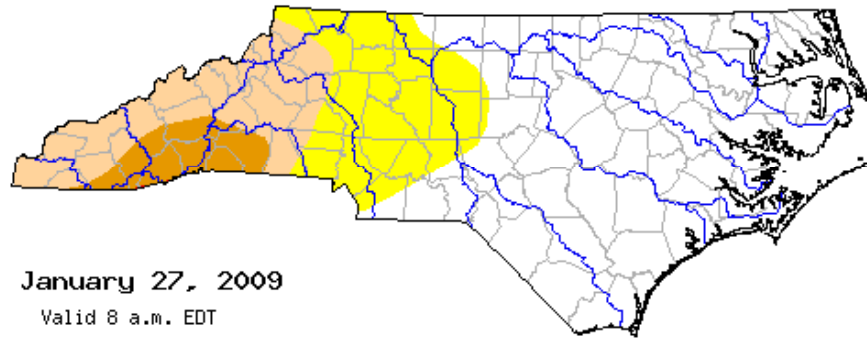
March 18, 2008
Valid 8 a.m. EDT



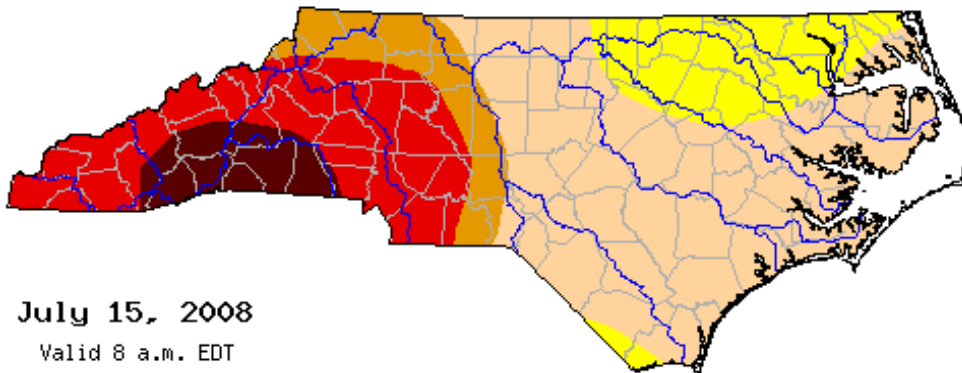
May 13, 2008
Valid 8 a.m. EDT

Drought Classifications

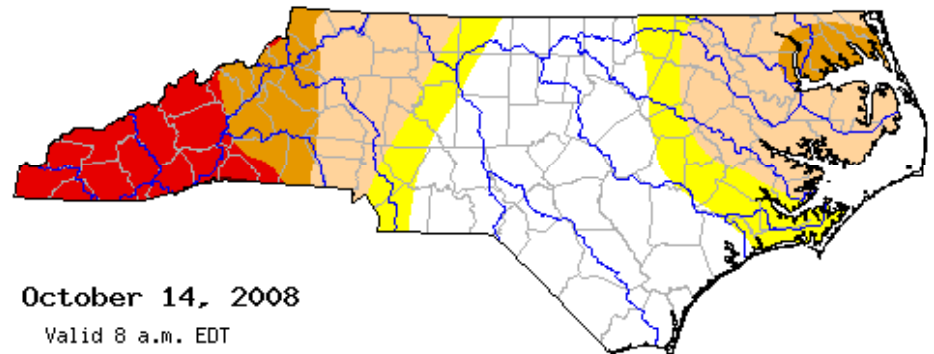
- D0 - Abnormally Dry
- D1 - Moderate Drought
- D2 - Severe Drought
- D3 - Extreme Drought
- D4 - Exceptional Drought



January 27, 2009
Valid 8 a.m. EDT

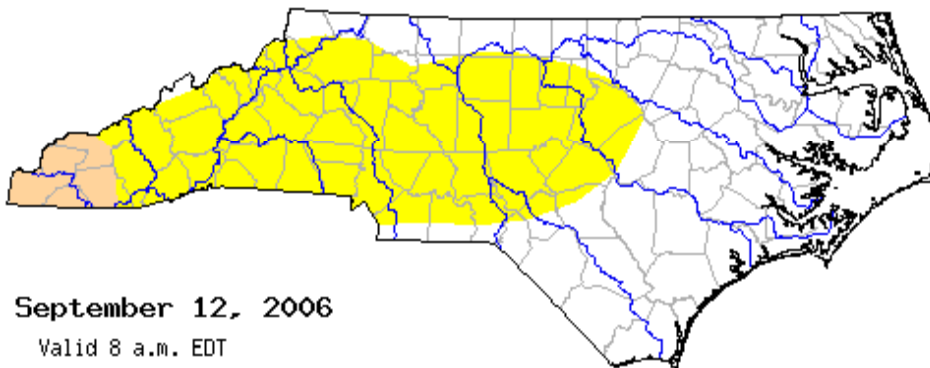


July 15, 2008
Valid 8 a.m. EDT

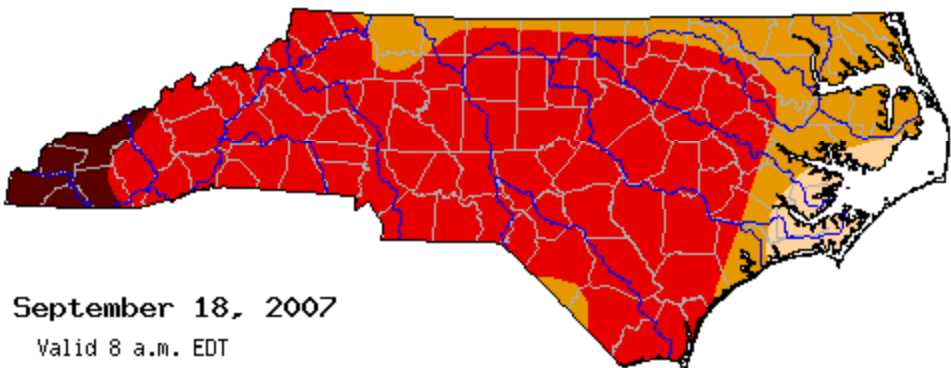


October 14, 2008
Valid 8 a.m. EDT

Drought History

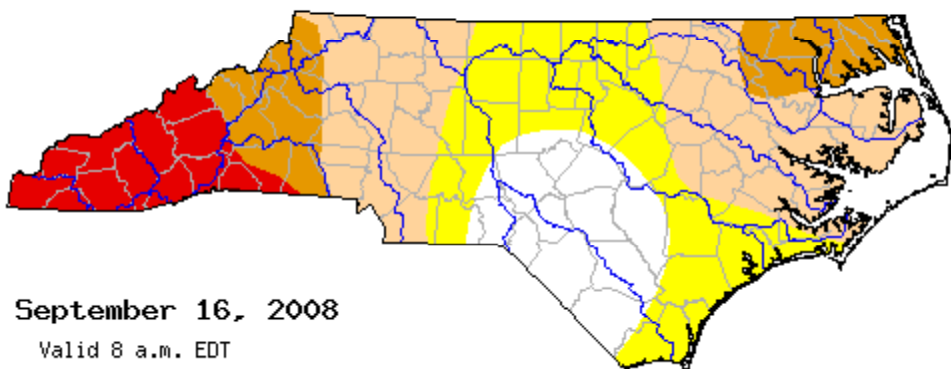


September 12, 2006
Valid 8 a.m. EDT

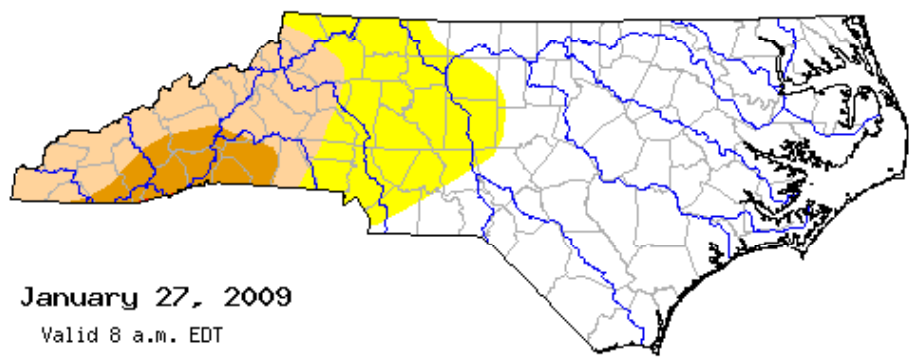


September 18, 2007
Valid 8 a.m. EDT

- Drought Classifications**
- D0 - Abnormally Dry
 - D1 - Moderate Drought
 - D2 - Severe Drought
 - D3 - Extreme Drought
 - D4 - Exceptional Drought



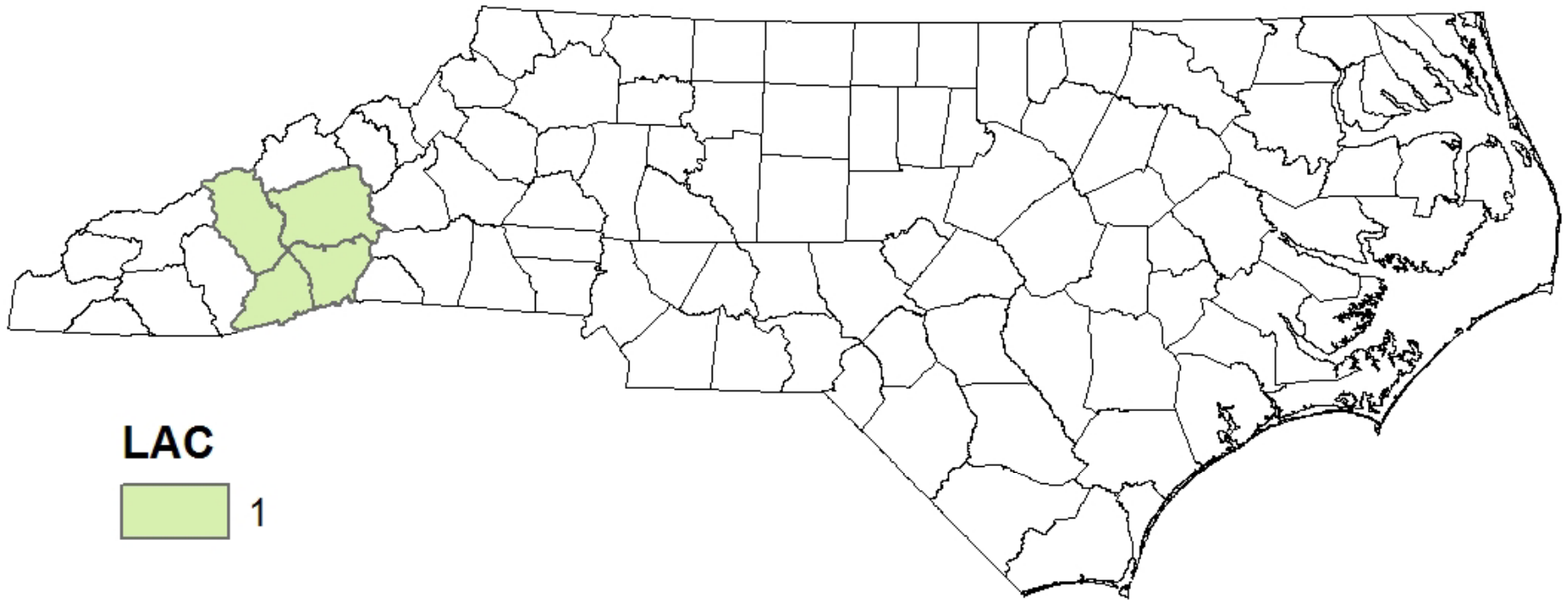
September 16, 2008
Valid 8 a.m. EDT



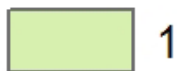
January 27, 2009
Valid 8 a.m. EDT

North Carolina Arbovirus Surveillance Data 2008

Human Positives as of 8-27-08



LAC

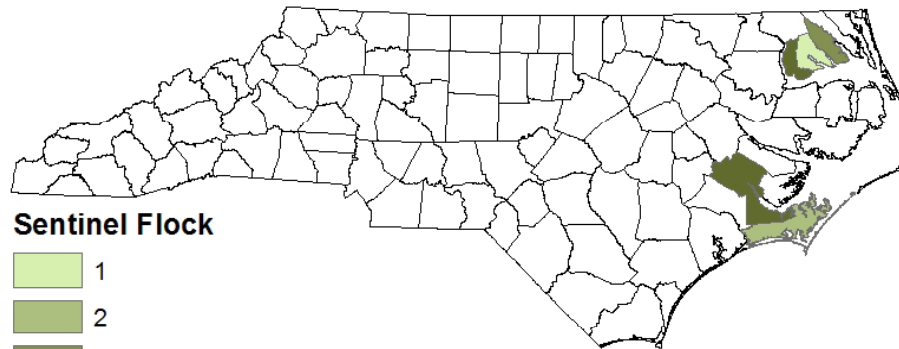


Four positives in 4 counties

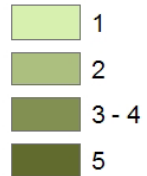
Data: SLPH
Map: Marcee Toliver, NC DENR, PHPI
Date: 8-27-08

2008 North Carolina Arbovirus Surveillance Data

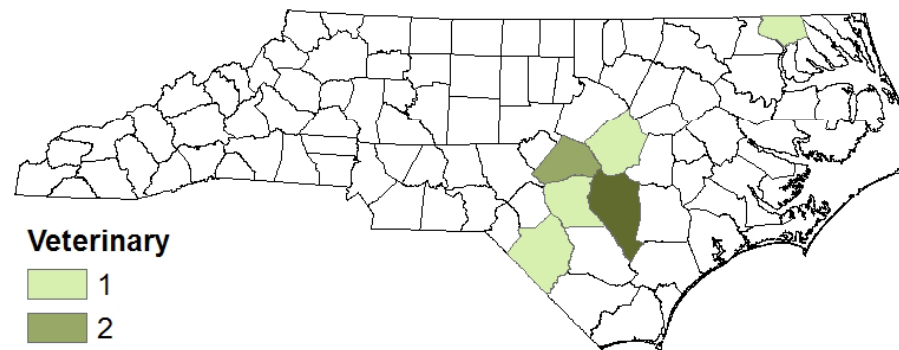
Veterinary and Sentinel Positives as of 9-24-08
Eastern Equine Encephalitis (EEE)



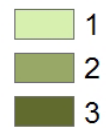
Sentinel Flock



17 EEE Positive hens in 5 counties.



Veterinary



9 EEE positive animals in 6 counties.

Data: PHPM, NCDENR
Map: Marcee Toliver
Date: 9-24-08

Mosquito Pools Tested 2008

Virus	Tested	Positive
EEE	285	3
WNV	398	0
LAC	39	0

Reported Human Arbovirus Cases 2008

Virus	Probable	Confirmed
LAC	1	6
WNV	1	0
EEE	0	1