



VectoMax™

**Each Extreme...
and Everything in Between**

Your Larvicide Toolbox

VectoBac

Biological Larvicide / GRANULES

VectoLex

Biological Larvicide / GRANULES

Each extreme,

VectoMax

Biological Larvicide / GRANULES

and everything in between.

What is VectoMax™?

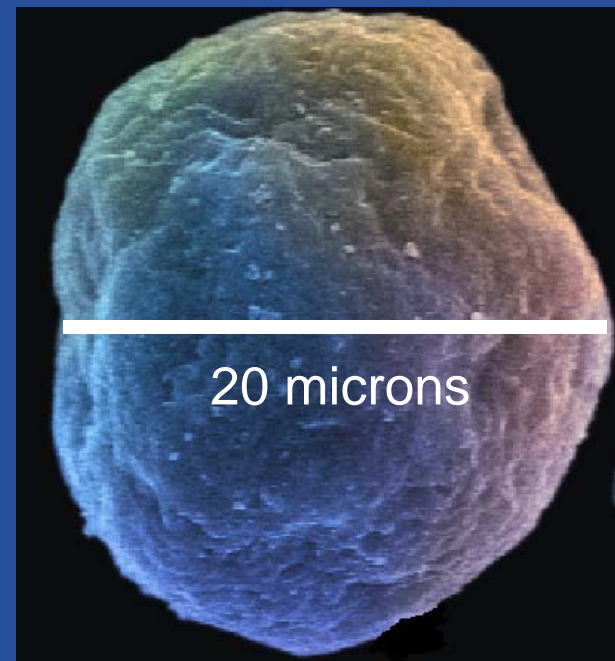
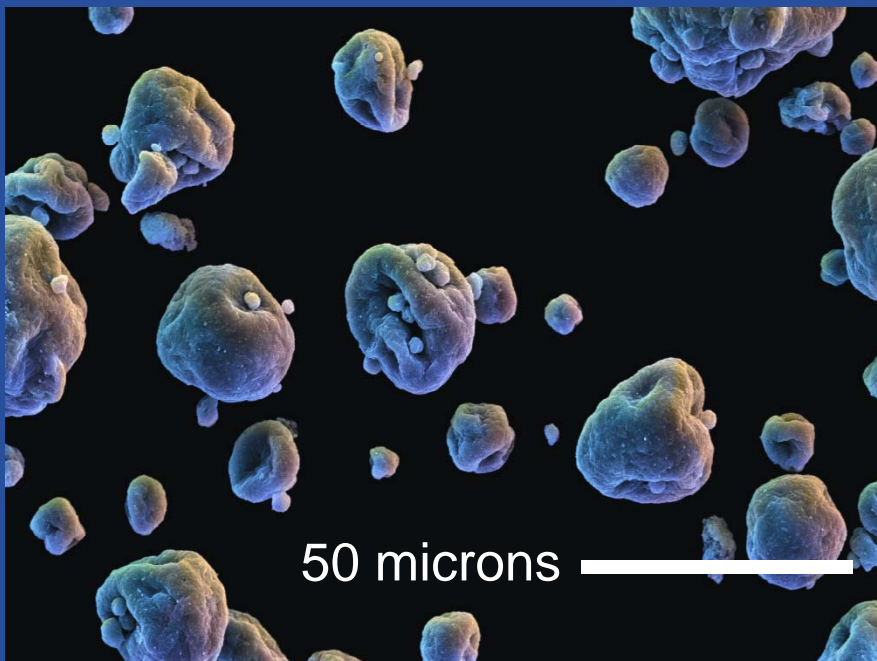


- VectoMax™ is a biological mosquito larvicide.
- Based on a combination of natural strains of *Bti* and *B. sphaericus*.

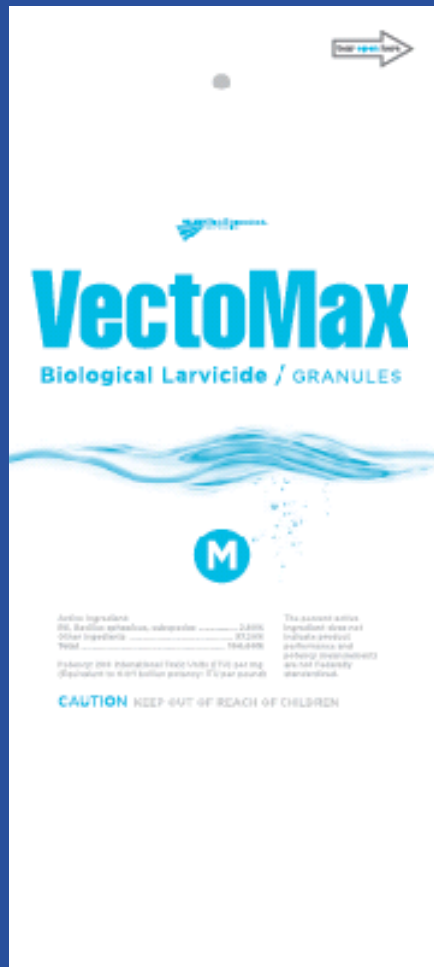
Advanced Combination Technology

- Manufactured using proprietary formulation technology that combines *Bti* and *Bsph* in a specific toxin ratio into every micro particle

100 microns = average diameter of human hair



VectoMax™ Activity



- Quick kill
- Controls all mosquito species
- Effective in clean and polluted waters
- Residual activity against several mosquito species

VectoMax™ G and CG

- Granular formulations
- 5/8 & 10/14 mesh corncob granules
- Potency of 50 BsITU
- Broadcast application 5-20 lbs/acre



VectoMax™ WSP

- Water soluble pouch formulation
- 10 gram WSP of VectoMax
- Placement application
- One pouch for up to 50 square feet of potential mosquito larval habitat (can treat before larvae present)



VectoMax™ WSP Field Data



- Simulated catch basin test
 - T. Su - Pre-oviposition test in simulated basin system with weekly flushing, Riverside, California, 2004
- Field testing in catch basins
 - R. Foussandier – Field test Lyon, France, 2007
 - R. Burkhalter – Field test Sacramento, California, 2007
 - T. McGonegal - Alexandria, Virginia.
 - Lane Carr, Randy Buchanan - Henrico County.

VectoMax WSP Catch Basin Study

Sample Day 1: 6/17/08 Treatment

Catch Basin #1

<i>Week</i>	<i>Rainfall</i>	<i>1 & 2 L</i>	<i>3 & 4 L</i>	<i>Pupae</i>	<i>Comments</i>
1 (6/25)	0.16	410	-	-	
2	1.53	690	21	-	3 egg rafts
3	0.49	-	-	-	1 egg raft, adults
4	-	233	18	-	4 egg rafts
5	-	215	24	-	1 egg raft, snails
6	0.02	338	19	4	4 egg rafts
7**	-	175	28	2	adults
8	0.11	172	3	2	3 egg rafts
9	-	115	4	-	adults
10	3.16	n/a	n/a	n/a	
11 (9/5)	-	102	51	-	

** Re-treated

VectoMax WSP Catch Basin Study

Sample Day 1: 6/17/08 Treatment

Catch Basin #2

<i>Week</i>	<i>Rainfall</i>	<i>1 & 2 L</i>	<i>3 & 4 L</i>	<i>Pupae</i>	<i>Comments</i>
1 (6/25)	0.16	82	-	-	1 egg raft
2	1.53	555	1	-	2 egg rafts
3	0.49	27	-	-	1 egg raft, adults
4	-	317	11	-	copepods
5	-	368	4	-	
6	0.02	195	1	4	worms
7**	-	342	5	2	2 egg rafts
8	0.11	85	-	2	3 egg rafts
9	-	-	-	-	
10	3.16	n/a	n/a	n/a	
11 (9/5)	-	167	14	-	

** Re-treated

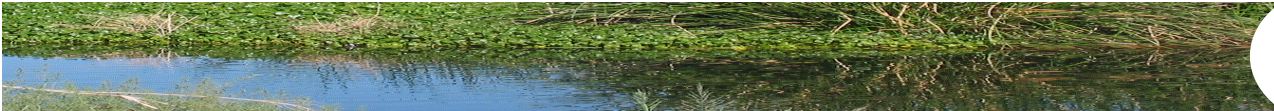
VectoMax WSP Catch Basin Study

Sample Day 1: 6/17/08 Treatment

Catch Basin #4

<i>Week</i>	<i>Rainfall</i>	<i>1 & 2 L</i>	<i>3 & 4 L</i>	<i>Pupae</i>	<i>Comments</i>
1 (6/25)	0.16	700	1	-	5 egg rafts
2	1.53	208	32	4	1 egg raft
3	0.49	1	-	-	3 egg rafts
	-	800	20	-	copepods
5	-	414	7	2	
6	0.02	153	18	11	worms
7**	-	220	15	2	2 egg rafts
8	0.11	760	8	-	
9	-	578	2	1	albopictus larvae
10	3.16	n/a	n/a	n/a	
11 (9/5)	-	305	128	1	

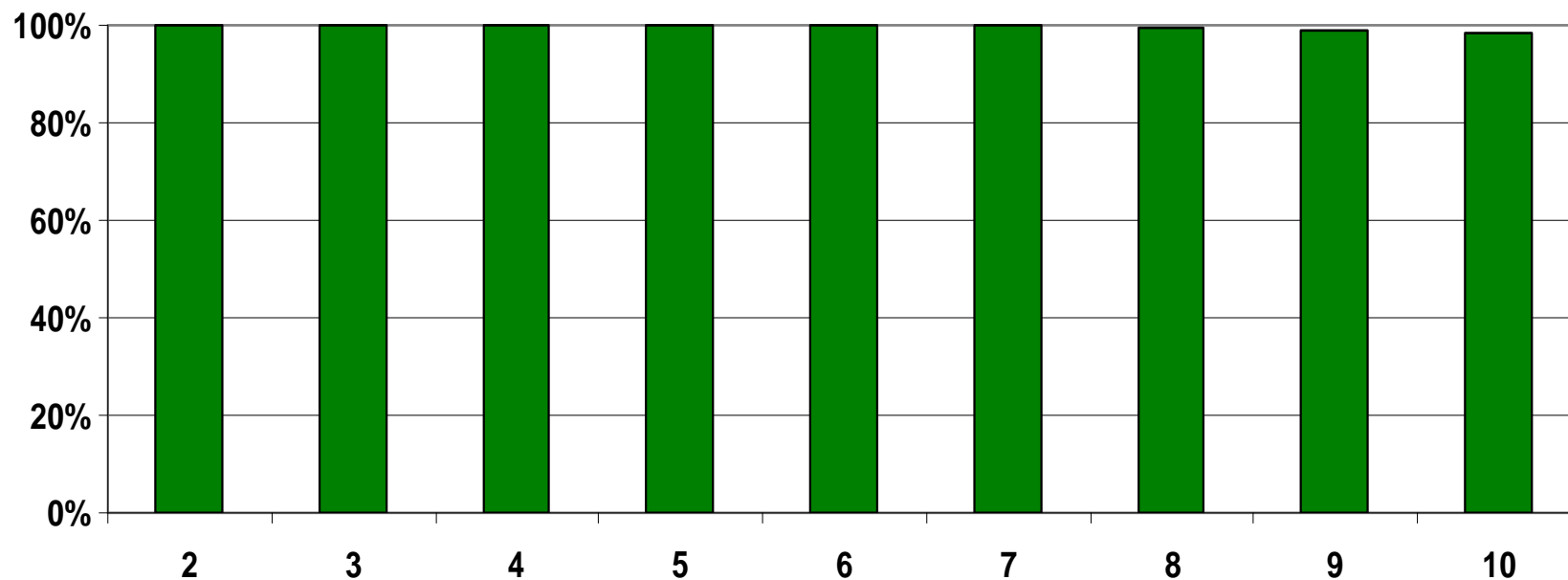
** Re-treated



VectoMax™ WSP Residual



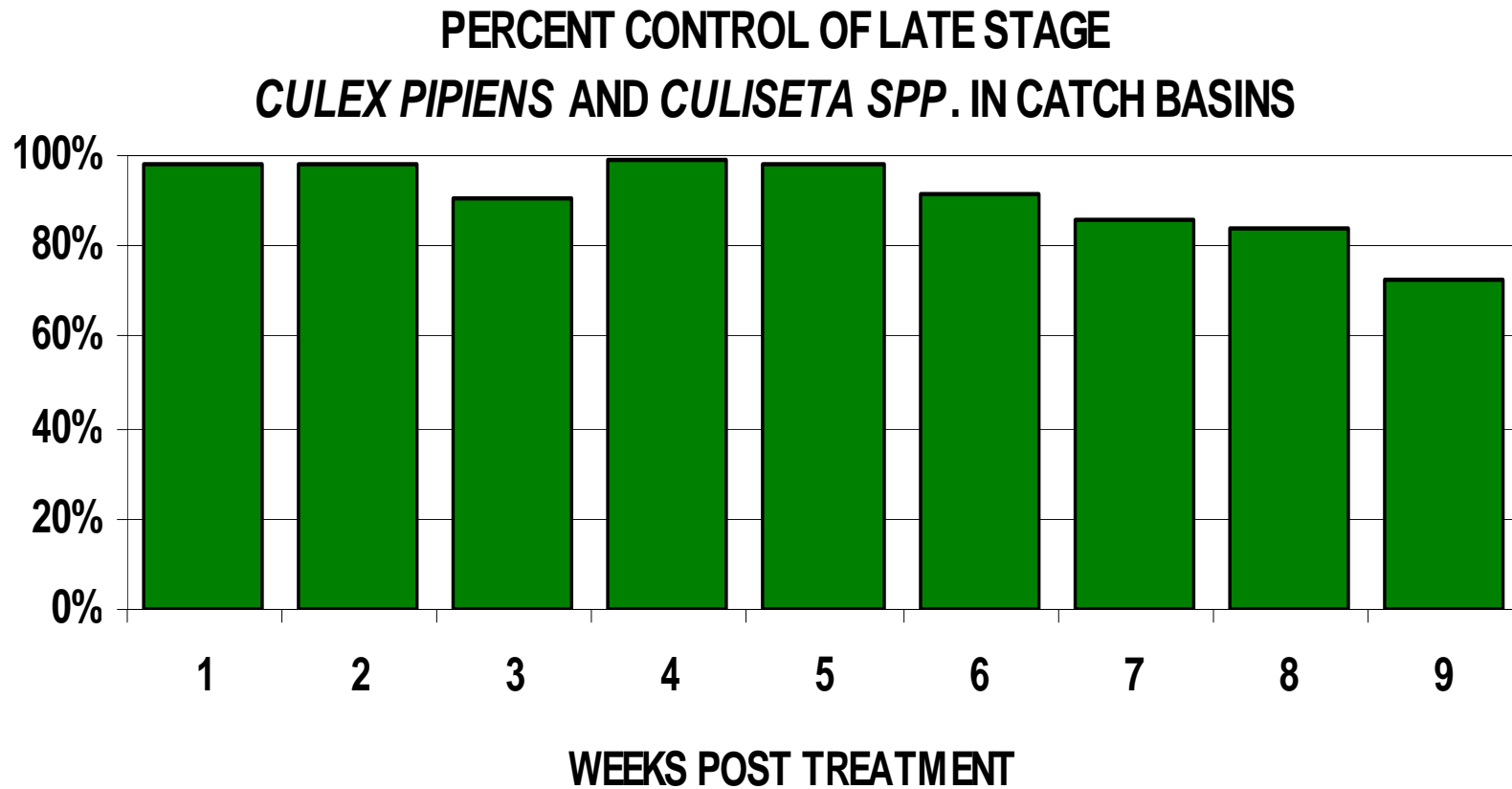
**PERCENT CONTROL OF *CULEX SPP.*
IN SIMULATED CATCH BASINS**



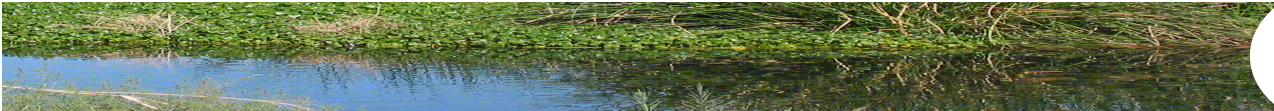
WEEKS POST TREATMENT

Data Source: T. Su, Riverside, California 2004

VectoMax™ WSP Residual



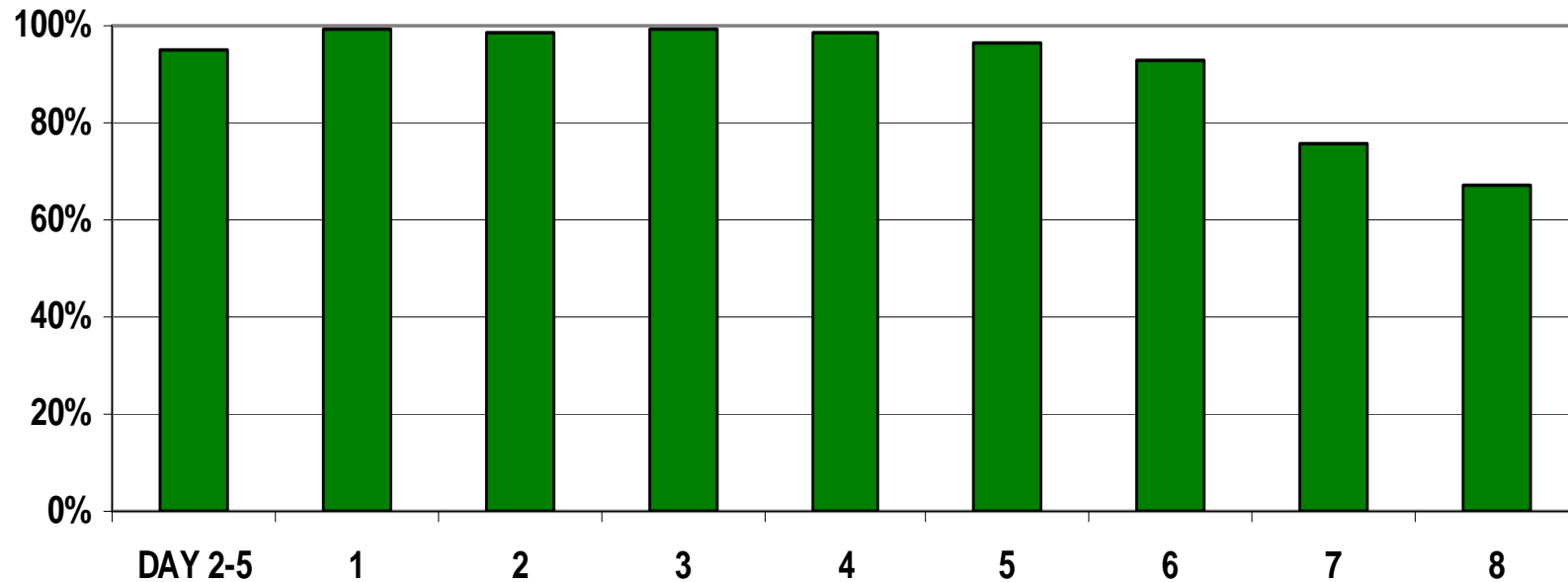
Data Source: R. Foussandier, Lyon, France 2007



VectoMax™ WSP Residual



**PERCENT CONTROL OF *CULEX* SPP.
IN CATCH BASINS**



WEEKS POST TREATMENT

Data Source - R. Burkhalter, Sacramento-Yolo MVCD, California 2007

VectoMax™ CG Efficacy



- Microcosm and small plot tests
 - *Ae. taeniorhynchus* – T. Floore 2007
 - *Ae. vexans* – M. Rohlf 2004
 - *An. quadrimaculatus* – A. Ali 2004

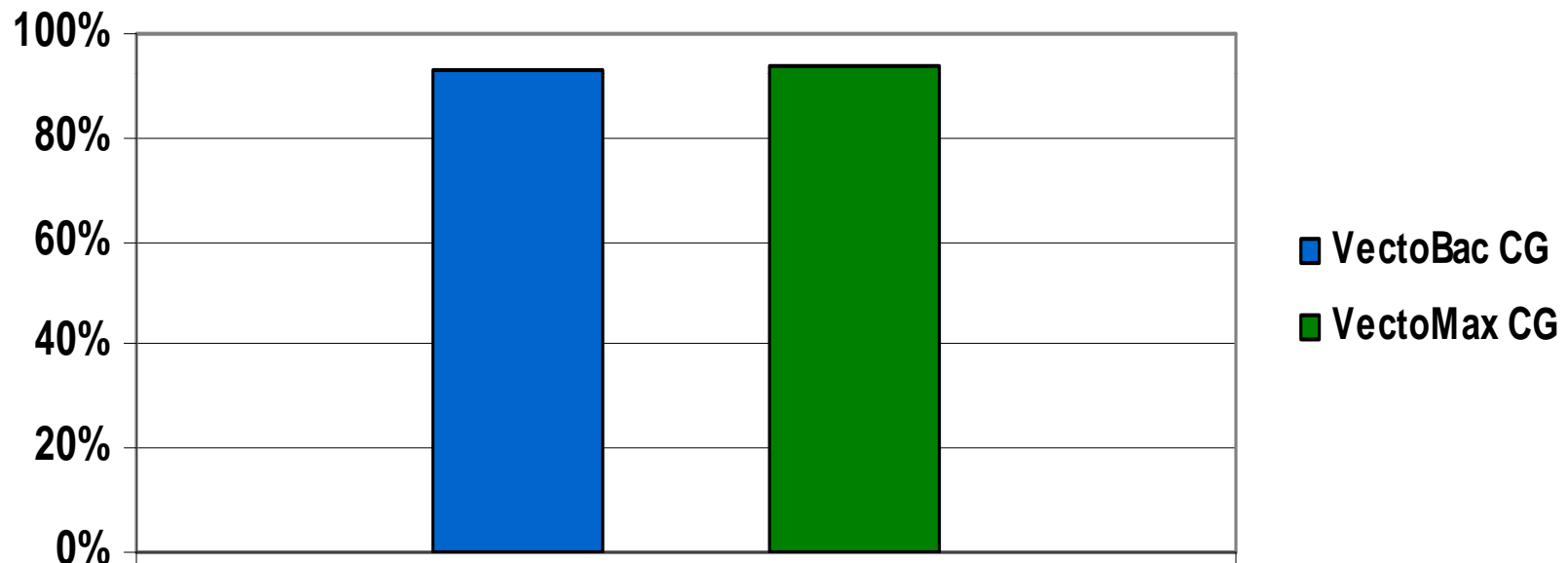


- Large scale field evaluations
 - *Cx. tarsalis* – G. Hatch 2006
 - *Mixed species* – D. Turner 2008

Aedes taeniorhynchus Control with VectoMax™



PERCENT CONTROL OF *Aedes taeniorhynchus* IN MICROCOSMS AT 24 HOURS POST TREATMENT



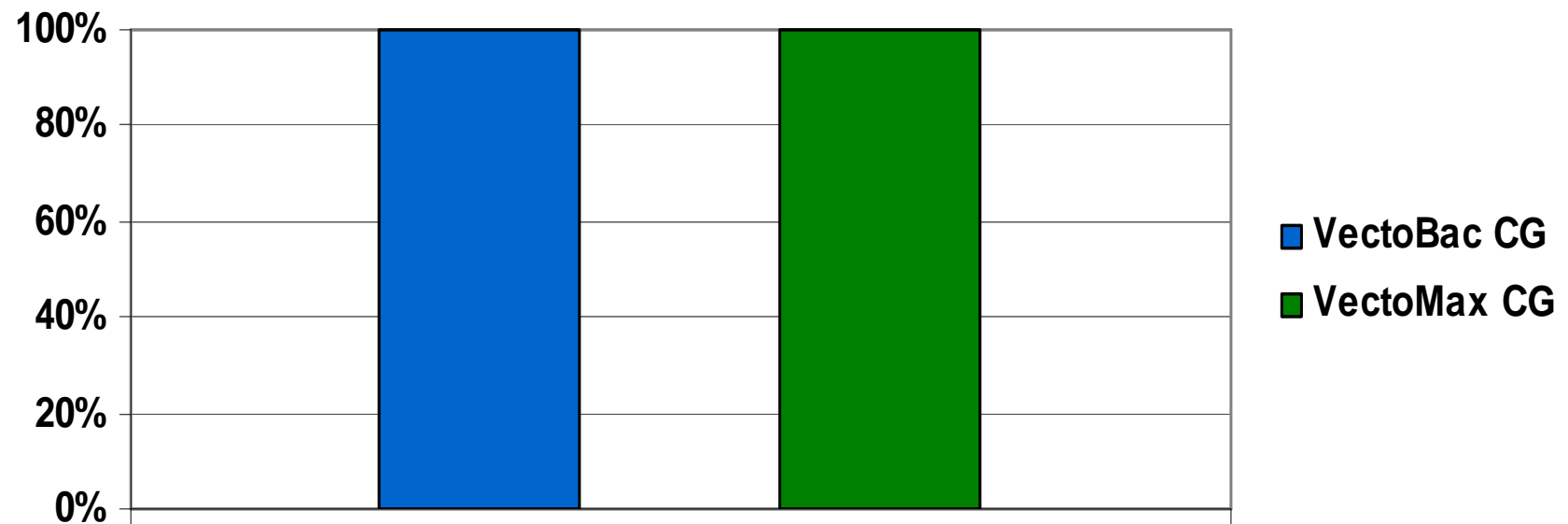
APPLICATION RATE: 10 LBS/ACRE

Data source: FAMU, Panama City, Florida, 2007

Aedes vexans Control with VectoMax™



PERCENT CONTROL OF *Aedes vexans* IN SMALL FIELD PLOTS AT 48 HOURS POST TREATMENT



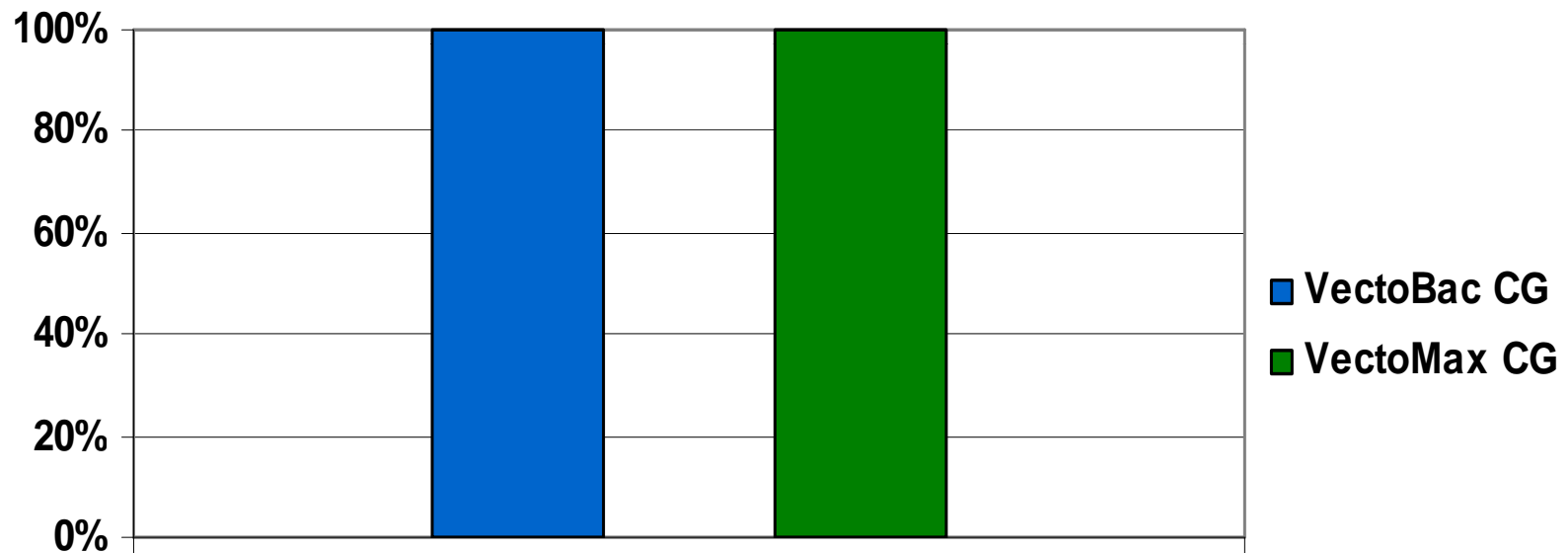
APPLICATION RATE: 5 LBS/ACRE

Data source: RAR, Benton County, Washington, 2004

Anopheles quadrimaculatus Control with VectoMax™



PERCENT CONTROL OF *ANOPOHELES QUADRIMACULATUS* IN MICROCOSMS AT 48 HOURS POST TREATMENT



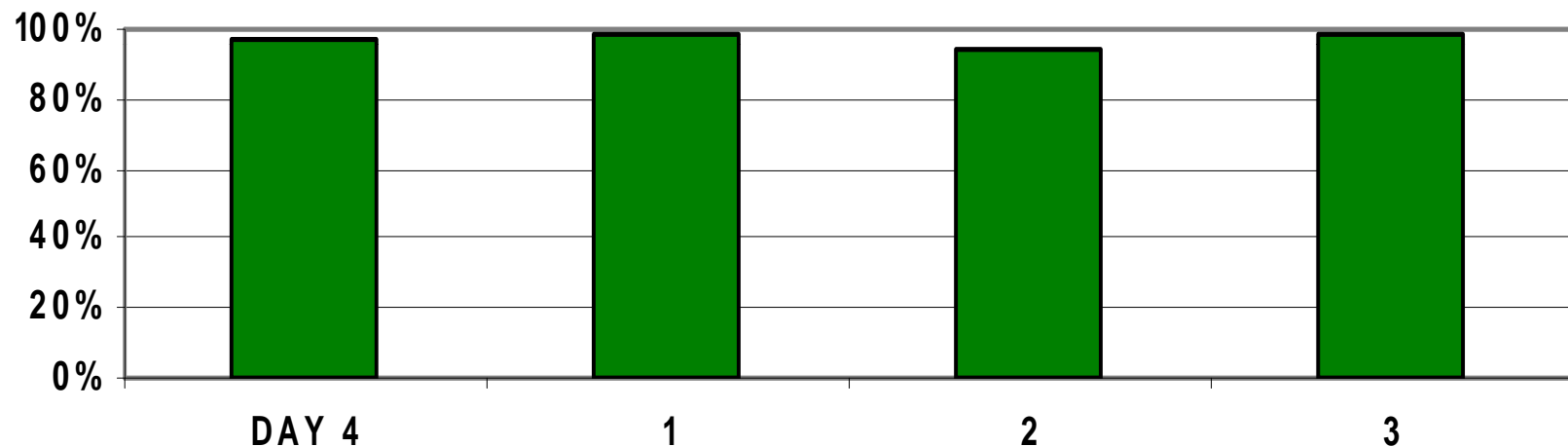
APPLICATION RATE: 2.5 LBS/ACRE

Data source: A. Ali, University of Florida MREC, 2004

Culex tarsalis Control with VectoMax™



PERCENT CONTROL OF *CULEX TARSALIS* FOLLOWING AERIAL APPLICATION

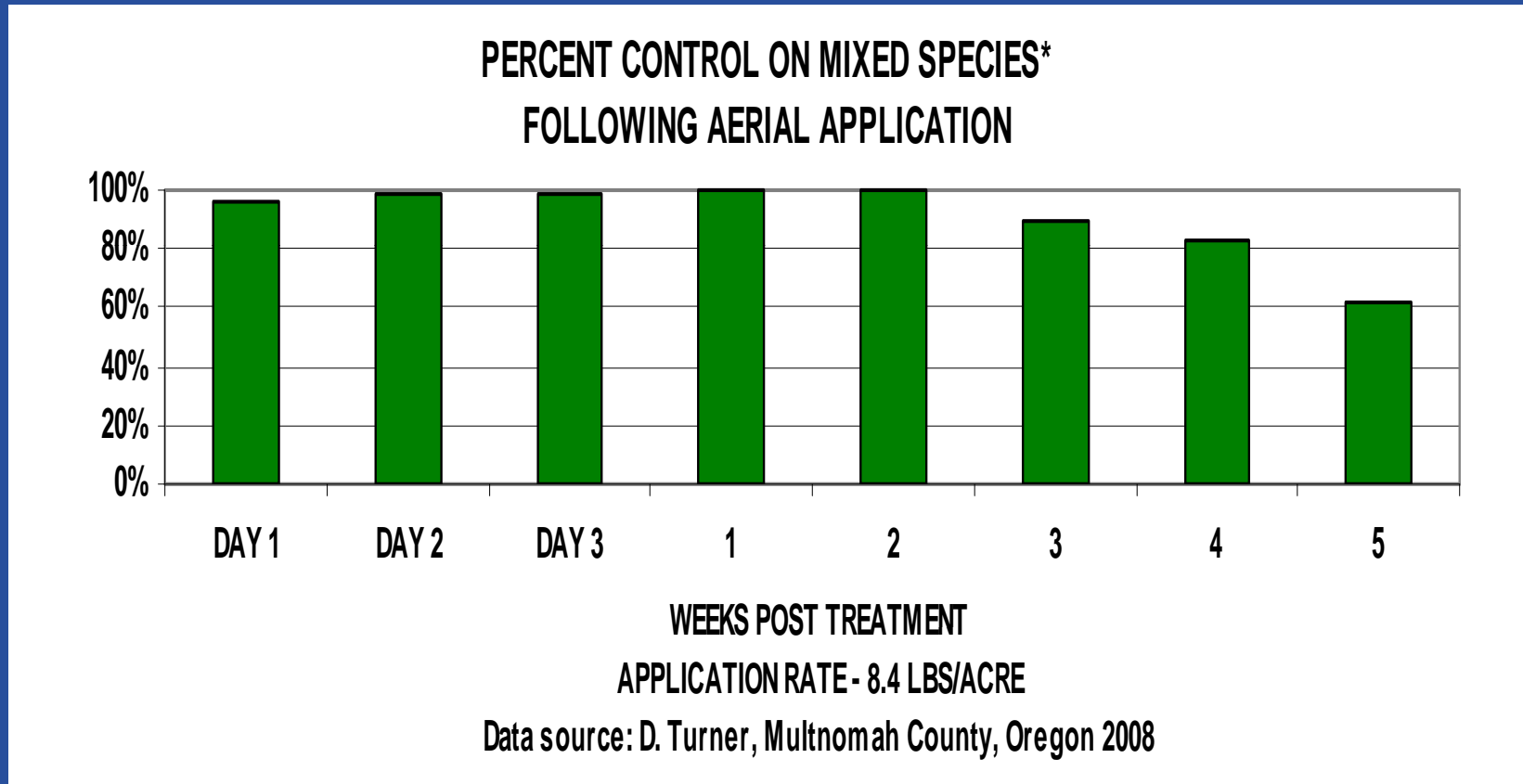


WEEKS POST TREATMENT

APPLICATION RATE - 8.6 LBS/ACRE

Data Source: G. Hatch, Davis County, Utah 2006

Mixed spp. Control with VectoMax™



* *Culex tarsalis*, *Culex pipiens*
Anopheles punctipennis, *Anopheles freeborni*
Culiseta incidens, *Culiseta inornata*

Summary



- Quick kill
- Controls all mosquito species
- Effective in clean and polluted waters
- Residual activity against several mosquito species